



Architecture & Interior

BHI CAMPUS

Bogor

Total Area : 1.729 M²

November 2023

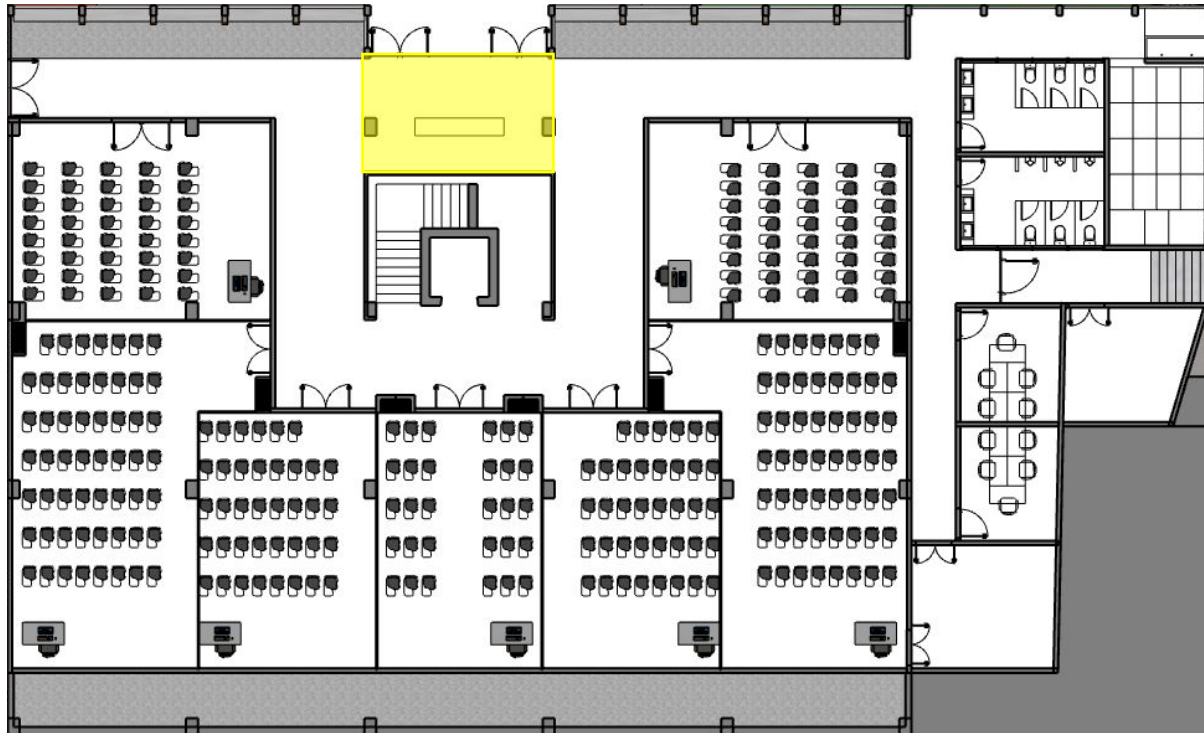
ematey co.

Hello,

We help you transform
your wildest **DREAMS INTO REALITY.**
We create, innovate, and evolve it
to its outermost potential.

Moodboard.

Receptionist Area



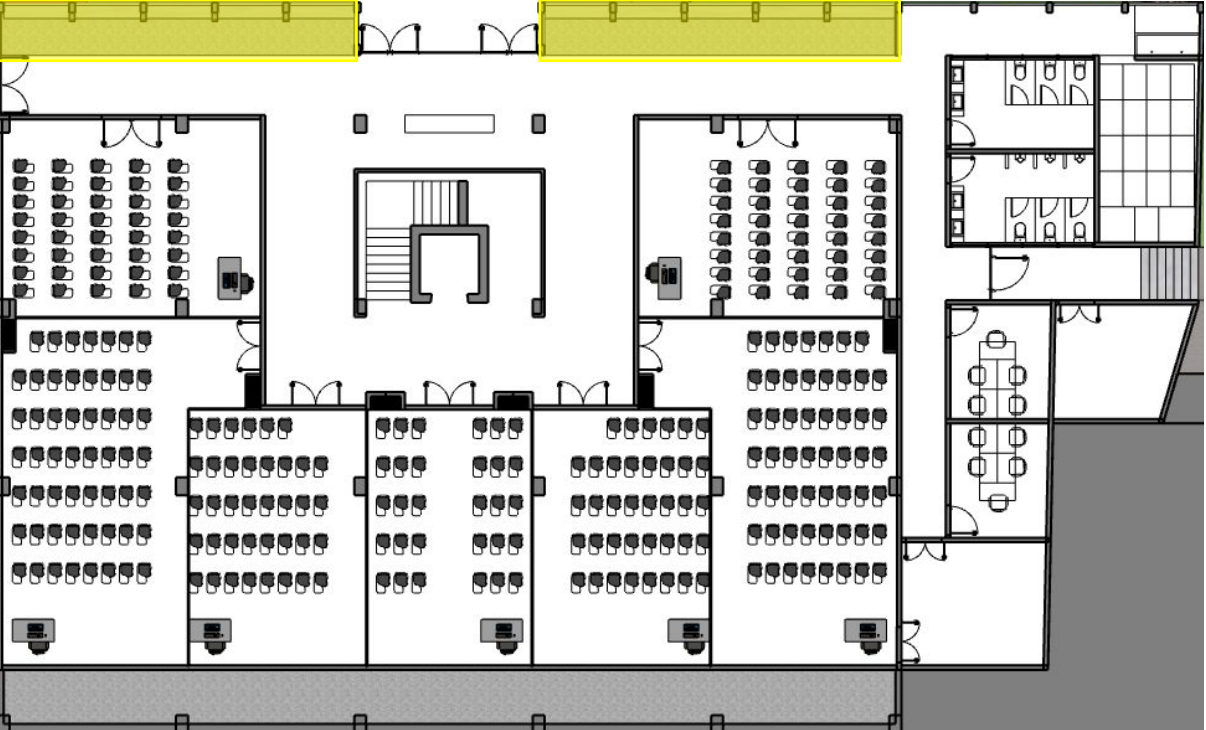
To create a welcoming environment, the general concept inherits a warm and natural atmosphere to embody hospitality. Through a lack of visual distraction, a simple interior design will help students to focus more on theoretical aspects. Thus embracing functional beauty and the essence of each room.

Area: **24.45 M²**



<p>Project: BHI Campus</p>	<p>Detail: Mood & Material Scheme</p>	<p>Judul Gambar: Moodboard</p>	<p>Approval:</p>
--------------------------------	---	------------------------------------	------------------

Waiting Room

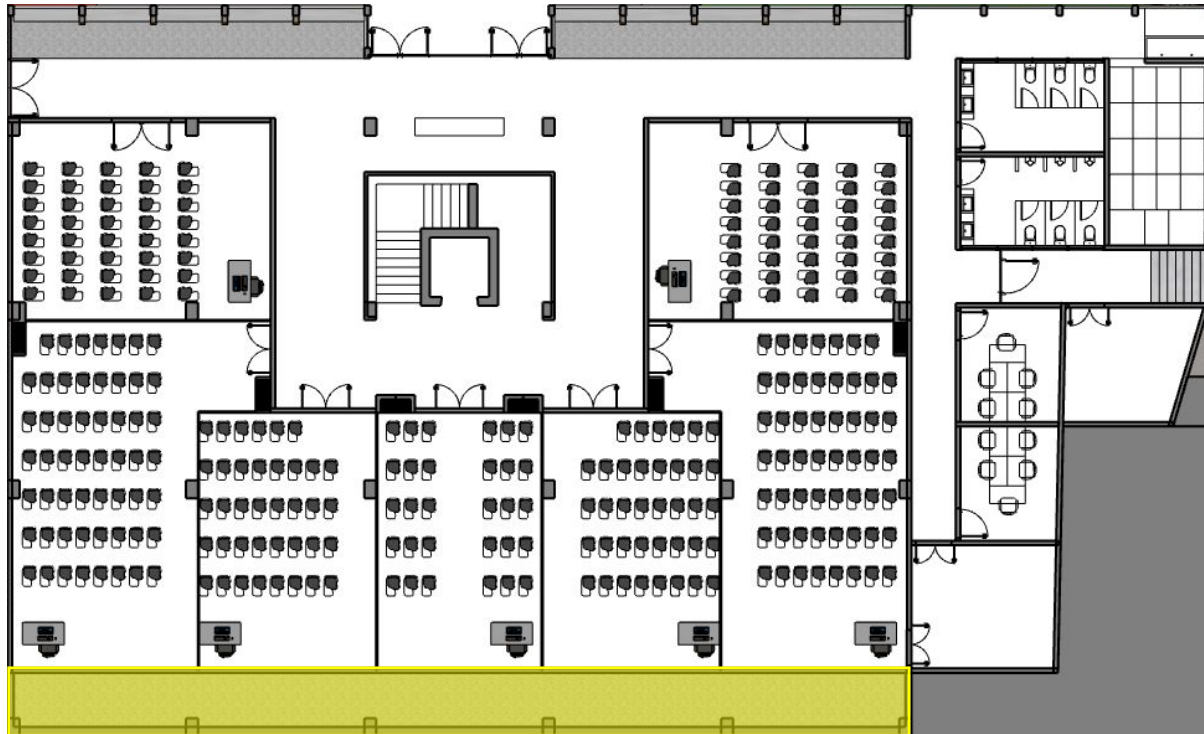


Waiting room will be a place for people to relax, work, and any various needs. Seating arrangements are adjusted with the availability of space. Glass window will be used to maximize natural lights and gives welcoming atmosphere as the building facade.

Area: **43.45 M²**

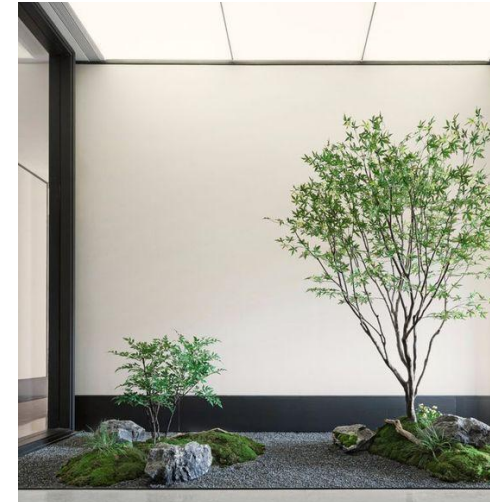
<p>Project: BHI Campus</p>	<p>Detail: Mood & Material Scheme</p>	<p>Judul Gambar: Moodboard</p>	<p>Approval:</p>
--------------------------------	---	------------------------------------	------------------

Japanese Garden



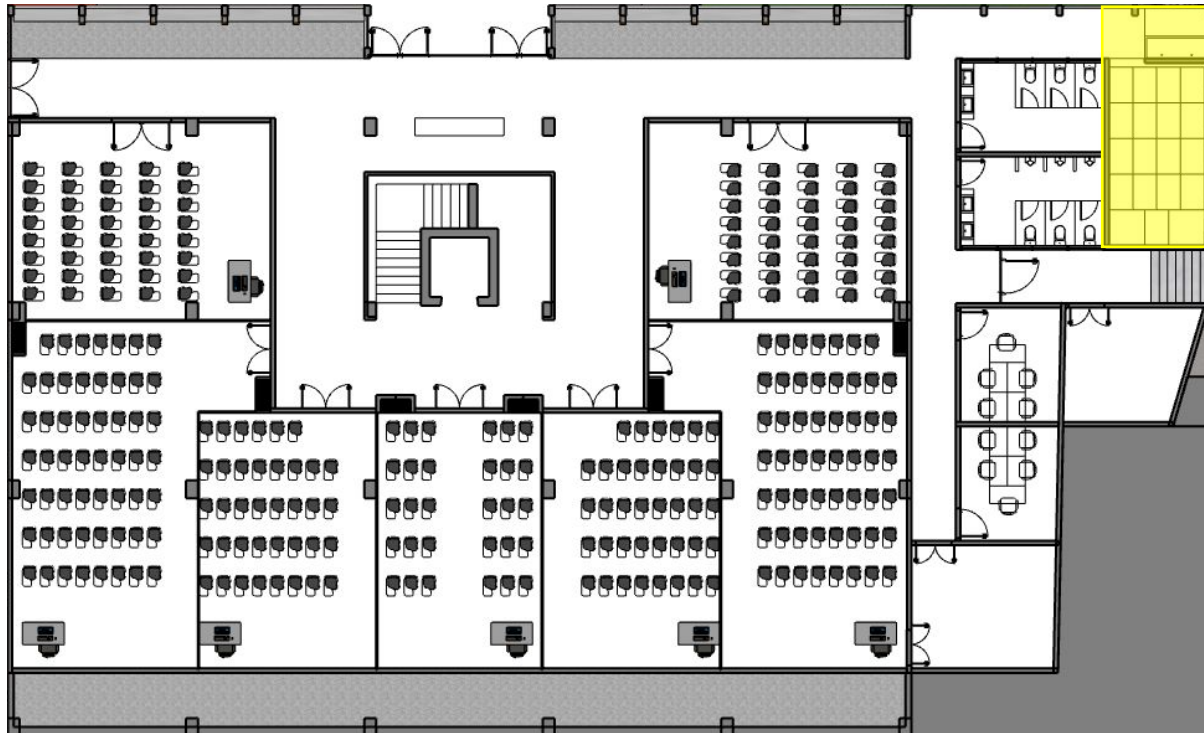
The Japanese garden stands as a tribute to nature, wherein plants are used to embellish the space and hide the outside world. The design is simple, as it draws influences from natural landscapes and has a low-maintenance layout.

Area: **55 M²**



<p>Project: BHI Campus</p>	<p>Detail: Mood & Material Scheme</p>	<p>Judul Gambar: Moodboard</p>	<p>Approval:</p>
--------------------------------	---	------------------------------------	------------------

Wudhu & Musholla



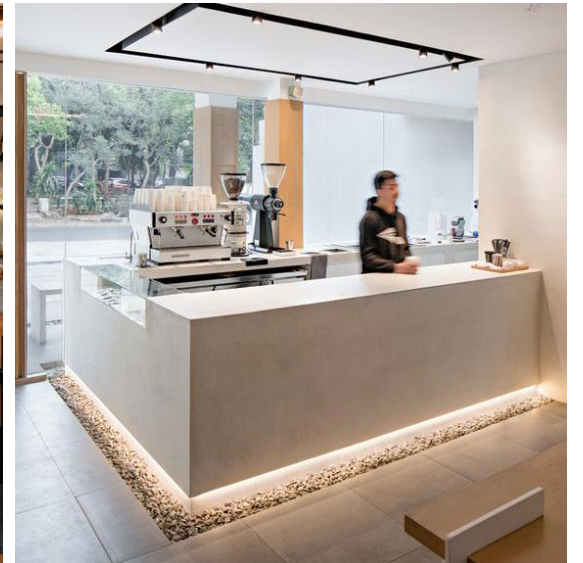
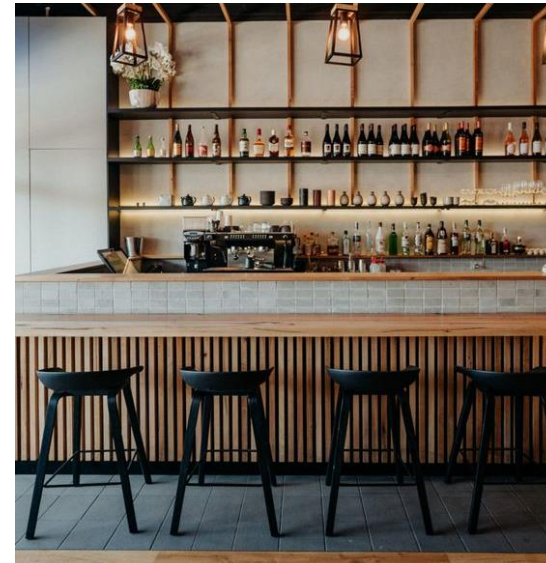
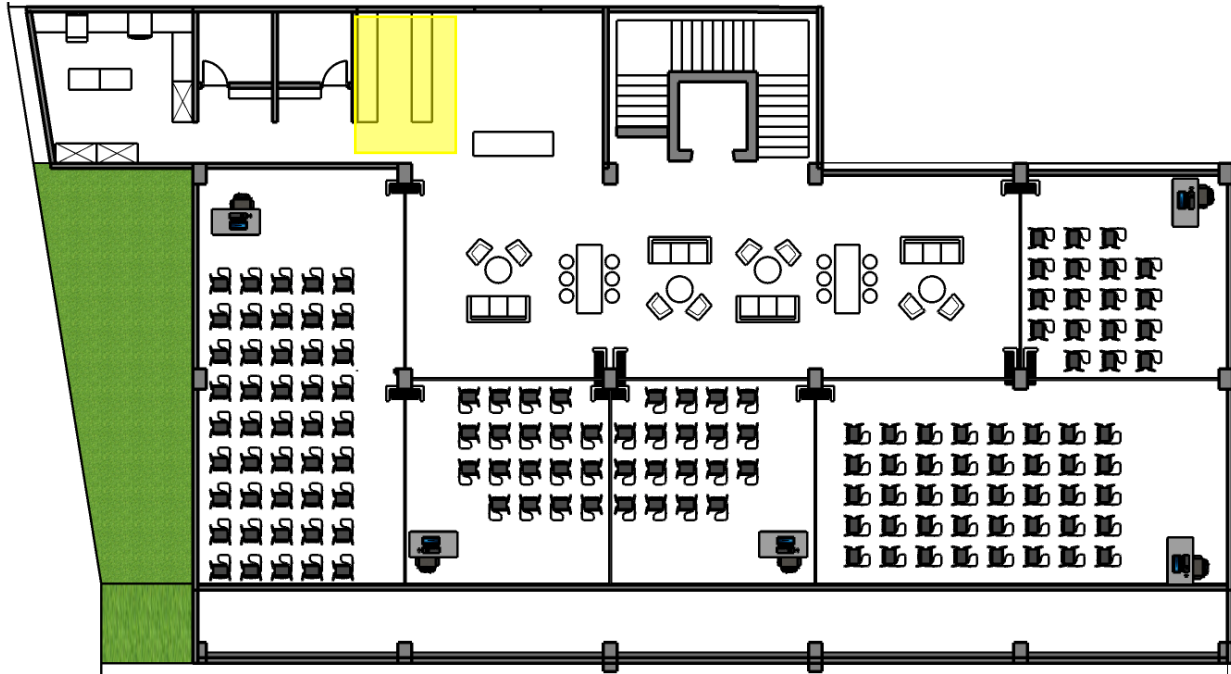
The musholla will be covered with roster bricks, to maintain the of open air circulation to prevent odors and dampness in the room.

Area: **27.50 M²**



<p>Project: BHI Campus</p>	<p>Detail: Mood & Material Scheme</p>	<p>Judul Gambar: Moodboard</p>	<p>Approval:</p>
--------------------------------	---	------------------------------------	------------------

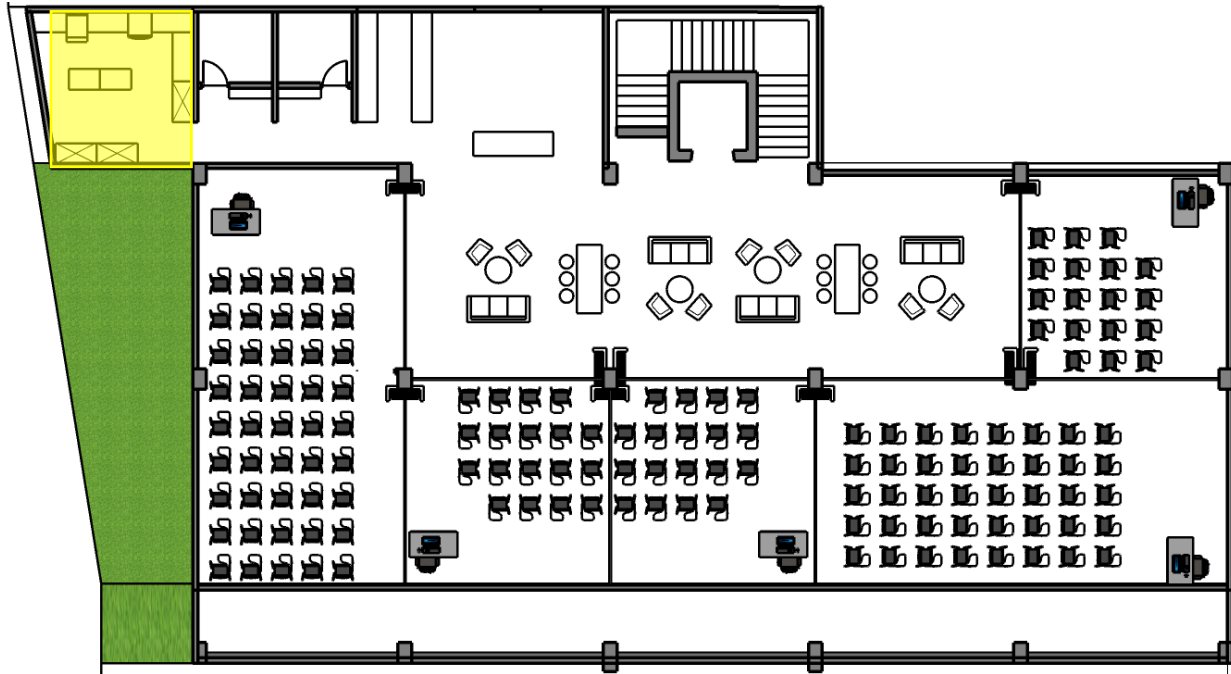
Bar Area



The bar will be a continuation on the receptionist area. Natural elements will also be present while lighting showcases and highlights the drinks and display.

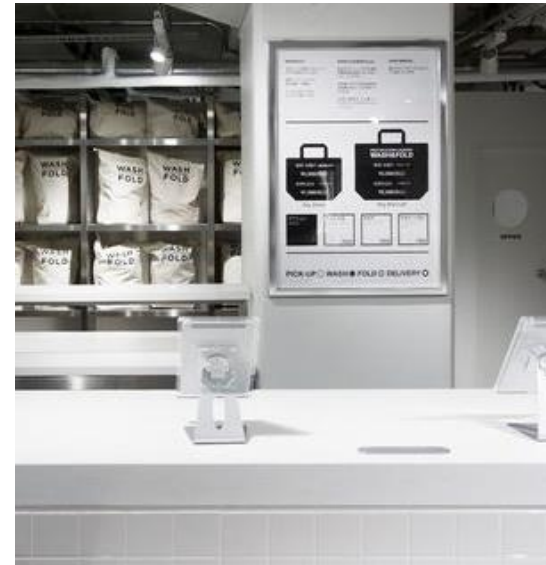
Area: **10 M²**

Laundry

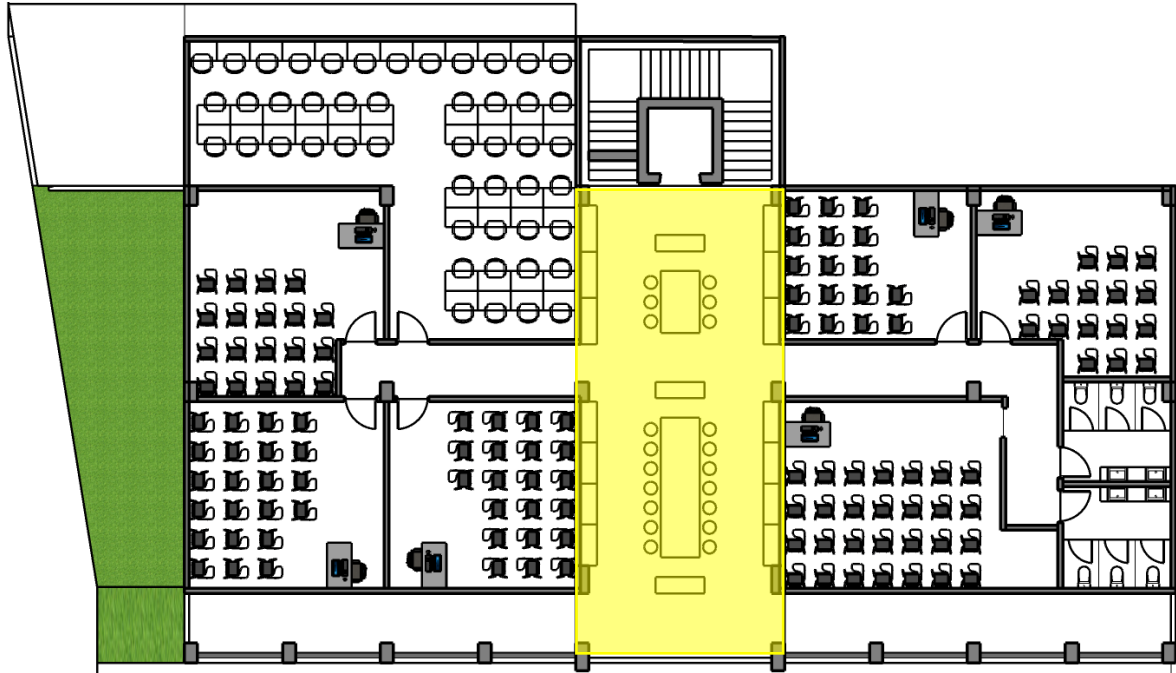


The laundry room will equip and be designed to everything that the campus needs. The goal is to create a clean environment through the right storage spaces and layout.

Area: **20 M²**



Open Library

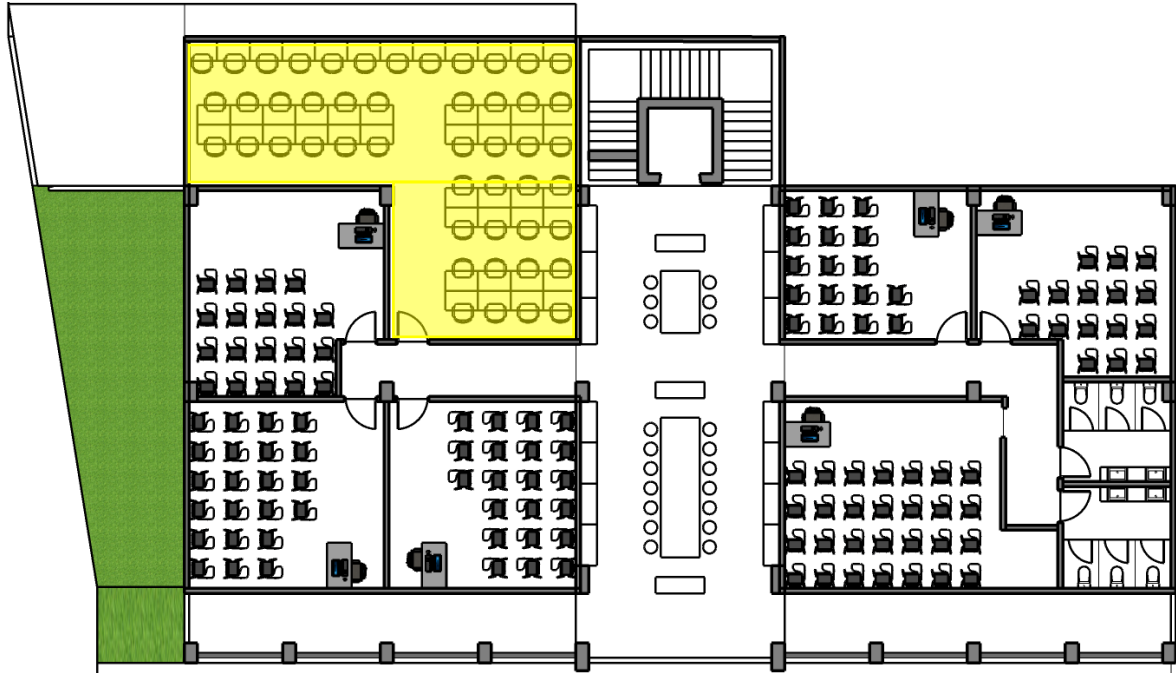


The open library will possess a collection of books or media. Due to its centralized and open location, it is very accessible for public use. Both personal and group activities can occur within this space.

Area: **92.5 M²**



Teacher's Office



The teacher's office will include an open floorplan workspace with a capacity of 48 staff members.

Area: **83 M²**



Kitchen



The kitchen and pastry room will equip and be designed to everything that the campus needs. Specific layout shall be discussed to improve the quality of teaching and learning.

Area: **140 M²**



Restaurant Mock Up

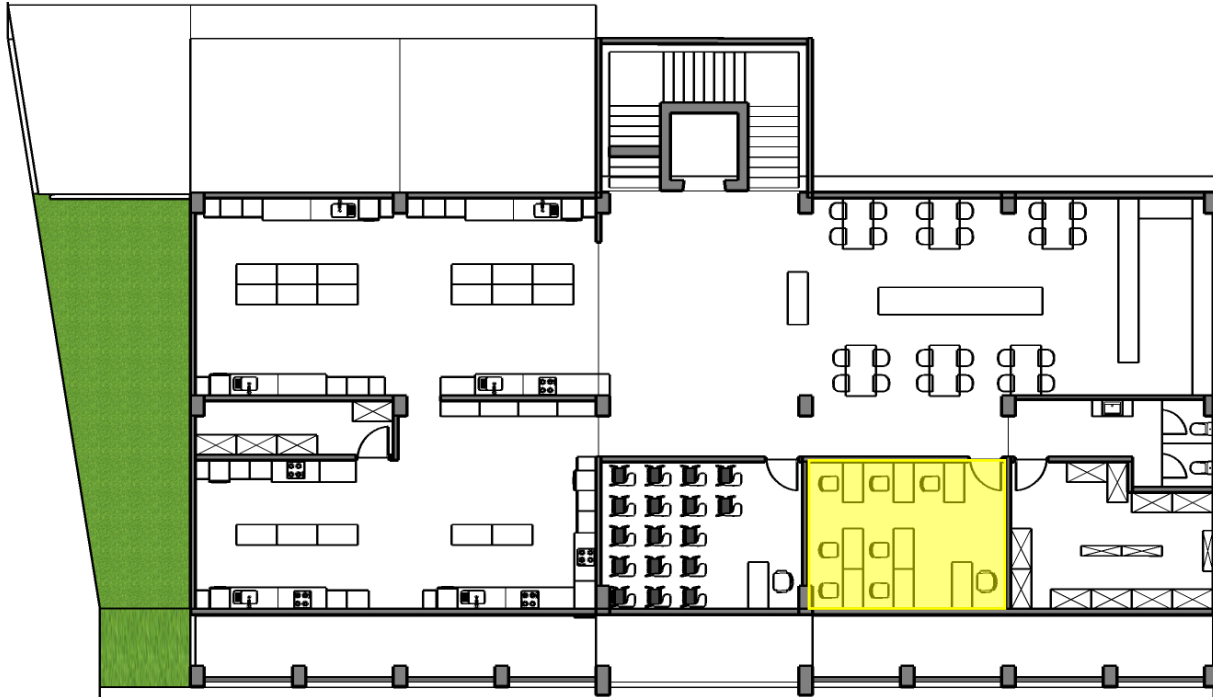


The kitchen and pastry room will equip and be designed to everything that the campus needs. Specific layout shall be discussed to improve the quality of teaching and learning.

Area: **78 M²**



Computer Lab

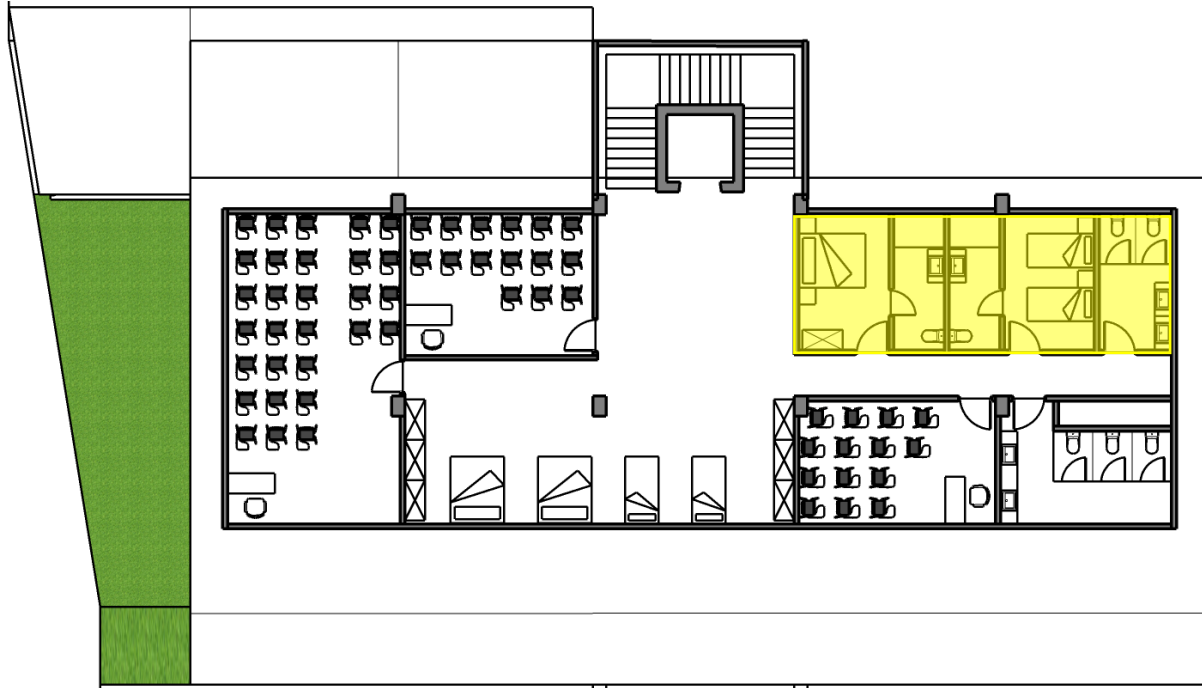


A similar case to the campus' classroom design, the computer lab will also inherit a clean but inviting place to teach and learn in. Capacity: 7 students

Area: **28 M²**

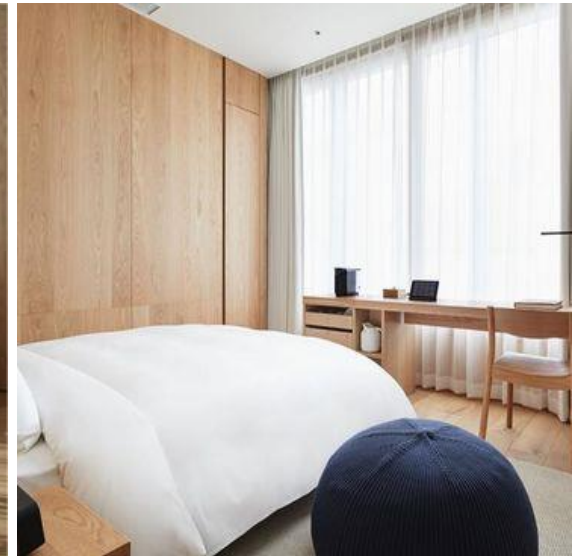
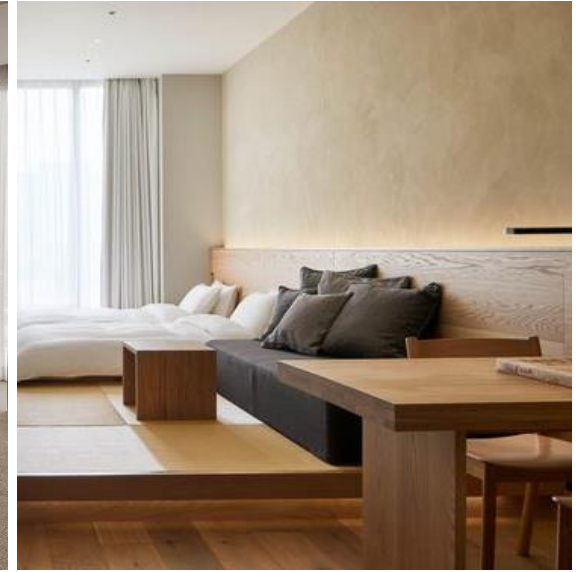


Hotel Room Mock Up



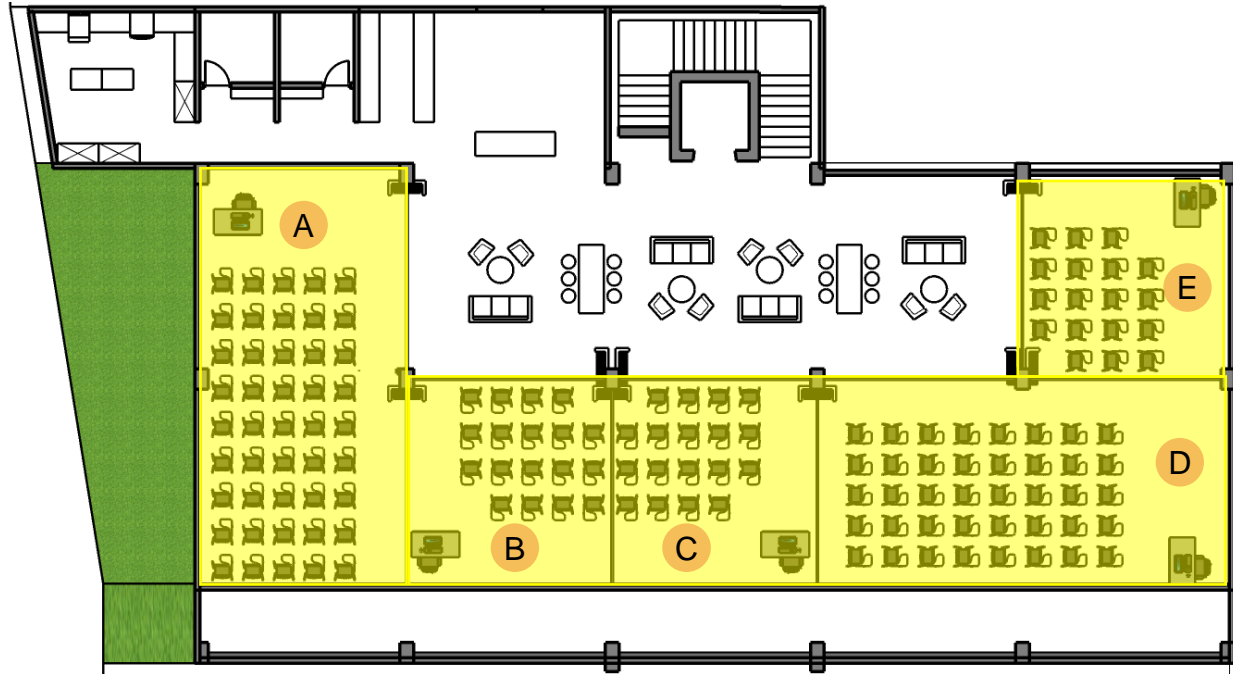
The hotel room mock up embrace simplicity and functional beauty. The goal is to provide everything that the students need to gain skills in and is up to standard (a necessary standard of quality for its intended use).

Area: **39 M²**



Classroom

FIRST FLOOR



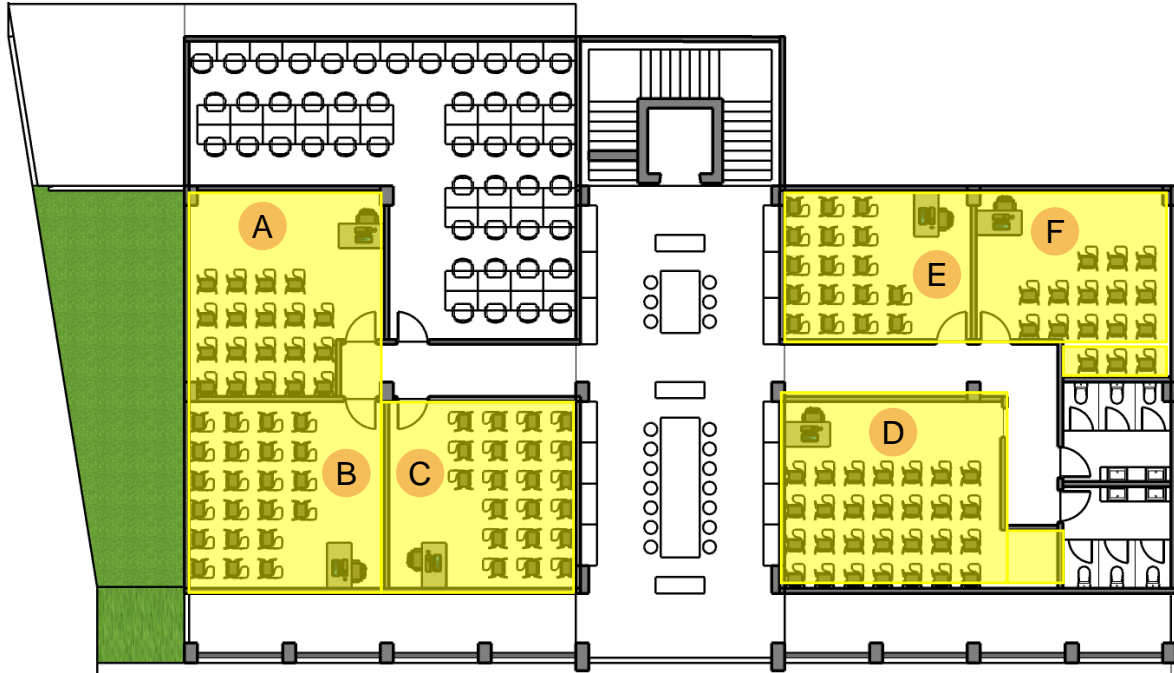
Classrooms are mainly decorated with neutral colors and balanced out with a cool grey tone due to its ability to ease tension and anxiety. It's purpose is to calm down the emotional state of students and bring a certain level of balance and harmony for a better learning experience. Capacity: A - 45; B - 18; C - 18; D - 40; E - 18

Area: **268 M²**



Classroom

SECOND FLOOR



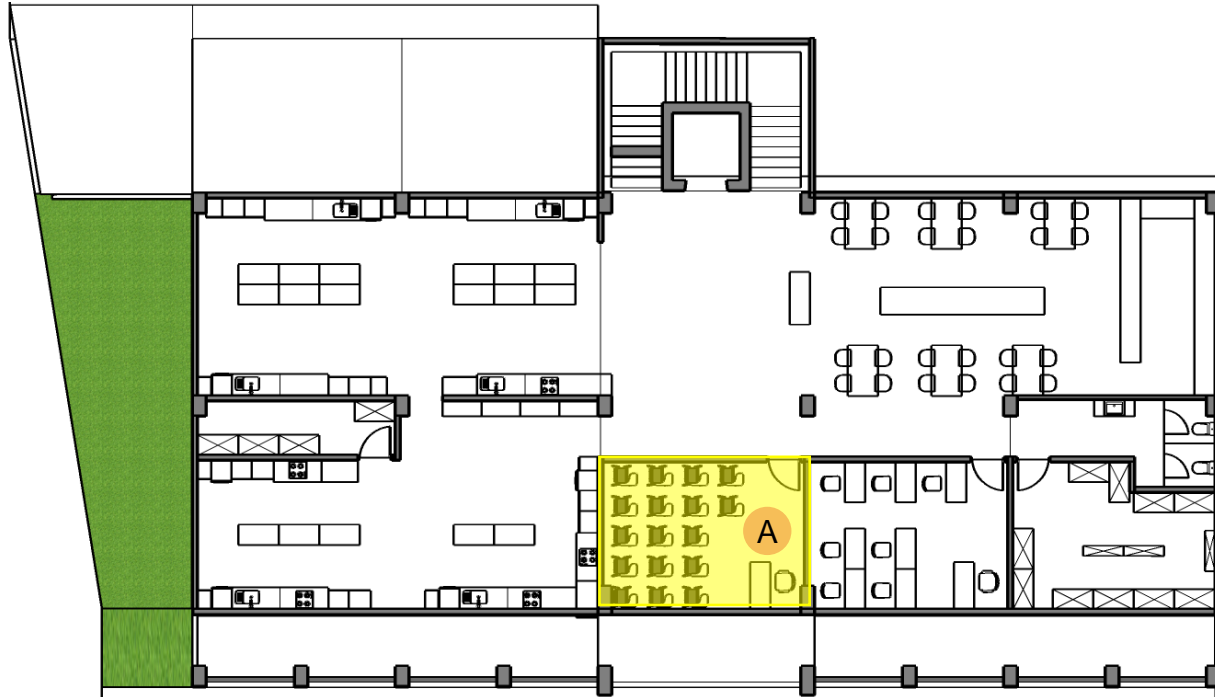
Classrooms are mainly decorated with neutral colors and balanced out with a cool grey tone due to its ability to ease tension and anxiety. It's purpose is to calm down the emotional state of students and bring a certain level of balance and harmony for a better learning experience. Capacity: A- 19; B - 22; C - 22; D - 28; E - 17; F - 17

Area: **215 M²**



Classroom

THIRD FLOOR



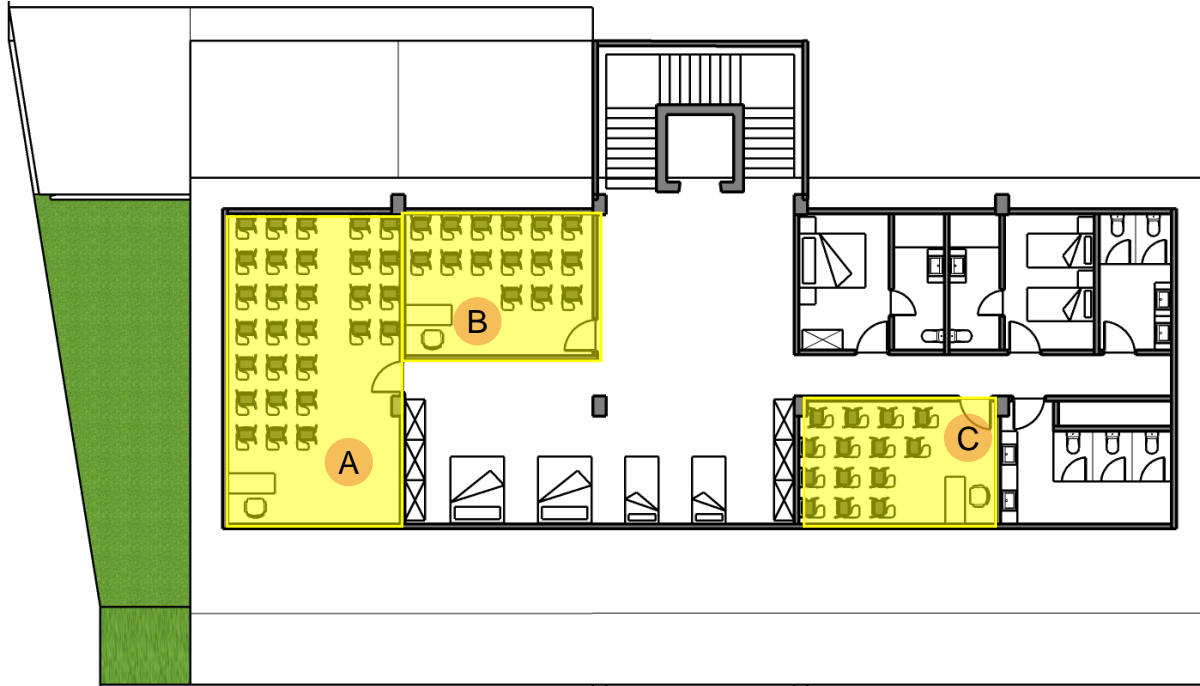
Classrooms are mainly decorated with neutral colors and balanced out with a cool grey tone due to its ability to ease tension and anxiety. It's purpose is to calm down the emotional state of students and bring a certain level of balance and harmony for a better learning experience. Capacity: A – 17 students

Area: **28 M²**



Classroom

FOURTH FLOOR



Classrooms are mainly decorated with neutral colors and balanced out with a cool grey tone due to its ability to ease tension and anxiety. It's purpose is to calm down the emotional state of students and bring a certain level of balance and harmony for a better learning experience. Capacity: A - 29; B - 15; C - 14

Area: **100 M²**

EMZY

PT. EMATEY MAGNIFIKO KOLONIA

To see our other projects, please visit us at:



[instagram.com/emateyco](https://www.instagram.com/emateyco)



[behance.net/emateystudio](https://www.behance.net/emateystudio)



www.ematey.co